

General Description

Glass fiber mesh fabrics combined with specially designed mesh surface treatments can be used in a wide range of applications.

The R 52 belongs to a family of meshes recommended for interior plaster reinforcement. It provides reinforcement in new construction as well as constructions under renovation. At least a strip of mesh should be applied over the joint of exposed areas like wall joints, corners, channels for water or gas pipes and electrical wiring, etc.

Technical characteristics

Works Standard: 0326 Glass Fibre Mesh Fabrics

Characteristics	Units Description	R 52 A101	
		Warp	Weft
Square Dimension	mm / informative value	4,8	5,1
Standard Width (1)	cm / individual value	100	
Roll Length (1)	m / individual value	50	
Treated Fabric Thickness	mm / informative value	0,34	
Loom state Fabric Weight	g/m² / informative value	52	
Treated Fabric Weight	g/m² individual value, minimum	60	
Treatment type	alkaliresistant without emollient, obstructing yarn drifting		

(1) Other dimension on request

Tensile strength (TS) and elongation:

Minimum individual tensile strength (N/50 mm) and maximum elongation (%) when reaching minimum tensile strength is ascertained according DIN EN ISO 13934-1 as per below.

	Tensile Strength		Elongation
	Nominal value	Individual value	Average value
Deposition method			
Standard condition	1000 / 900	850 / 850	4,0 / 4,0
Fast Test (6 hours)	700 / 600	500 / 500	4,0 / 4,0

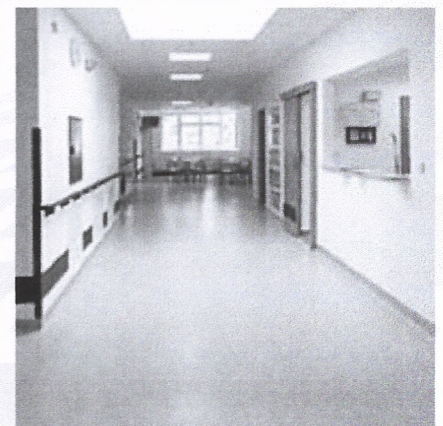
Additional Information

- **Quality inspection**
The way of quality inspection, taking of the samples and taking over of the material, is according to 0326 works standard
- **Packing:**
The rolls of fabrics are packed vertically in cardboard, on a wooden pallet. A precise method of packing is mentioned in the works standard for packing
- **Storing:**
Packed rolls are to be stored in dry rooms. Storing temperature is from -10°C to + 50°C

Technical Data Sheet

Properties

- Balanced strength and dimensional stability
- Compatible with all standard plasters
- Designed ideally for internal use
- Smooth and easy to handle



Edited by:
ADFORS Construction Products Europe

SAINT-GOBAIN ADFORS CZ s.r.o.
Sokolovska 106
CZ – 570 21 Litomysl
Tel: + 420 461 651 111
Fax: + 420 461 612 769
www.sg-adfors.com

ADFORS Construction Products Europe reserves the right to change the information given herein without prior notice